

March 2026

SPRING NEWSLETTER FRIENDS OF CASTLE

LOVE LANE - THEALE - POST 16



WELCOME

...to the first edition of the Friends of Castle newsletter! Our charity is here to support students at Castle School and Post 16, with specialist equipment, resources and services. We are excited to relaunch with our first event on Saturday 20th June for Castle Fest where we are fundraising towards a new sensory hub. We have lots planned for this charity, so please do get involved if you can. We want to build on the strong community already established, creating new connections and support for families, as well as much needed funds for the school. To get in touch with us you can send an email to: FriendsOfCastle@castle.w-berks.sch.uk



GET INVOLVED

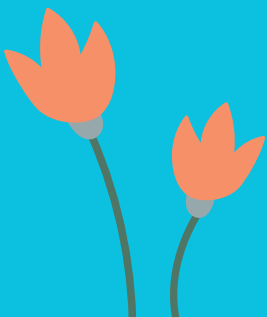
We would love for you to get involved by joining our membership list, sharing your ideas...or even becoming a trustee

Email:
FriendsOfCastle@castle.w-berks.sch.uk
or
contact the school
01635 42976

FOC TEAM

Teresa - Chair
Kaylene - Treasurer
Marissa - Treasurer
Helen - Secretary
Katie, Agnes, Estelle & Amanda,
Nicole, Liz- Committee members

*Community is the spirit that
draws people together*





CASTLE FEST

SATURDAY 20TH JUNE 11-1PM

Friends of Castle are excited to host our big annual fundraiser, Castle Fest! We're opening the gates at Love Lane from 11 am to 1 pm on Saturday 20th June, and everyone's invited. Bring your friends, family, and the whole neighbourhood along for a brilliant day out. From sporting activities, to fun filled treasure hunts, bouncy castles and a sensory corner, there is something for everyone. We've also got a packed line-up of music, tasty food, prizes and plenty of stalls to keep you entertained. See you there!

Please contact us if you want to run a stall, volunteer on the day or would like to make a prize donation.

JustGiving

SENSORY HUB

Friends of The Castle are currently raising funds to bring something truly special to our pupils: a fully portable, calming and immersive SENSE Station Core sensory hub that can reach every child who needs it. The Castle School is a specialist setting in Newbury supporting children and young people with a wide range of learning, communication and sensory needs. Many of our pupils benefit greatly from calming, interactive sensory environments that help them regulate, communicate and engage with learning. However, not every class can access a traditional sensory room when they need it. The SENSE Station Core will allow us to bring a high-quality sensory experience directly to the pupils who need it most. To donate, please scan the QR code.

